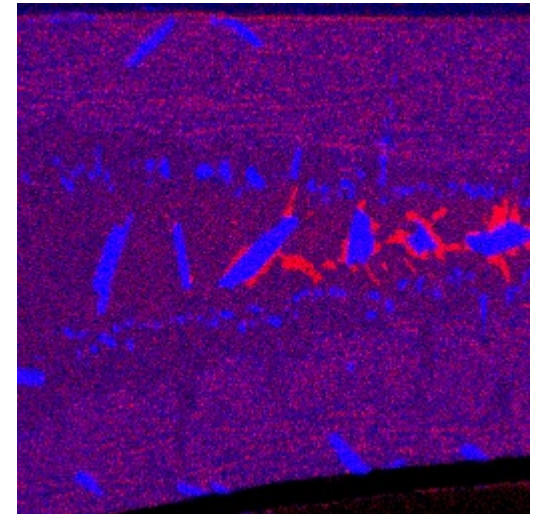
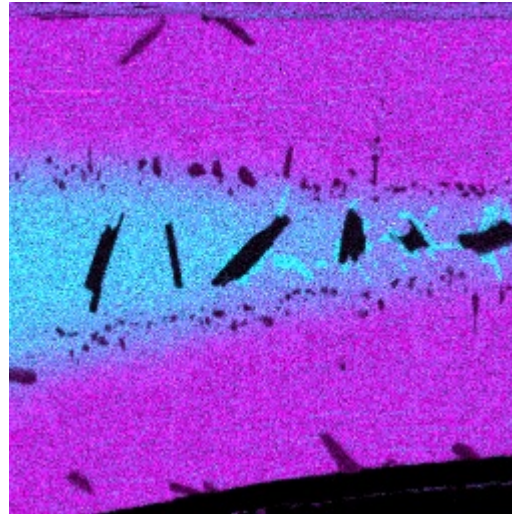
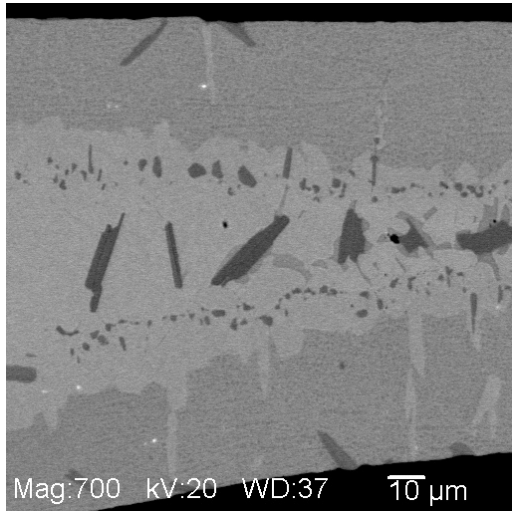
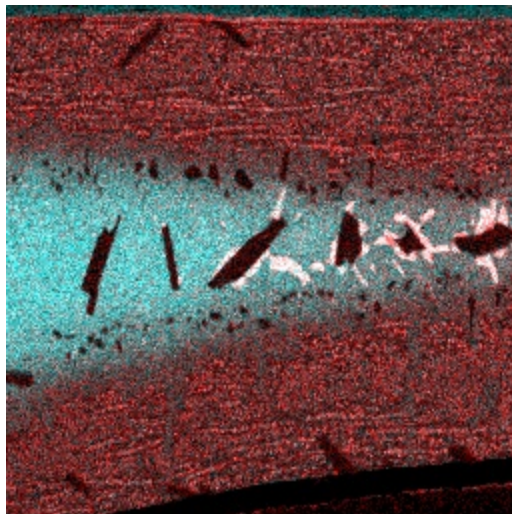


Identification of Microstructure of Thin-Gauge Austenitic and Ferritic Stainless Steel Braze Joints



Cyan = Ni Pink = Fe

Blue = Cr Red = Al



Cyan = Ni

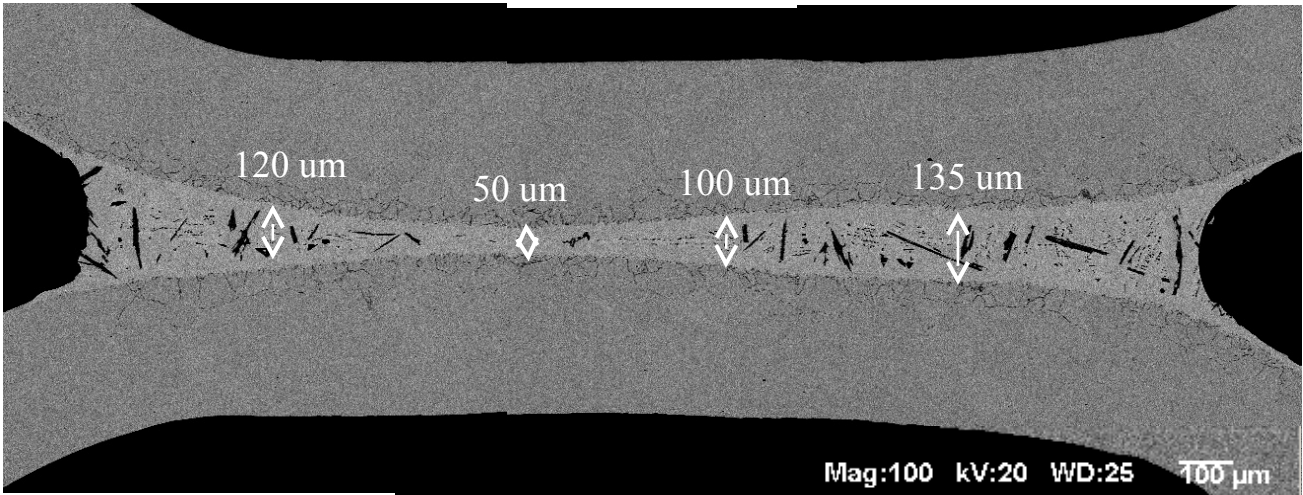
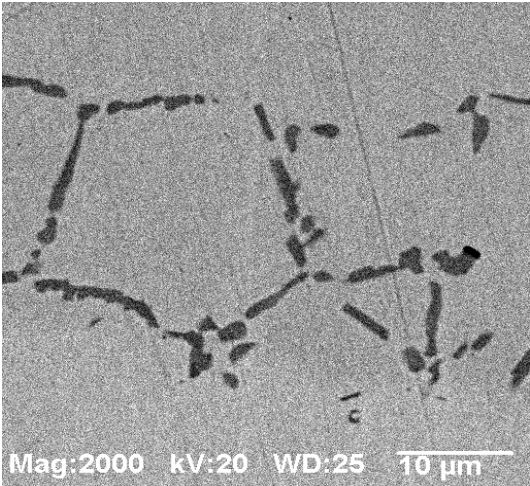
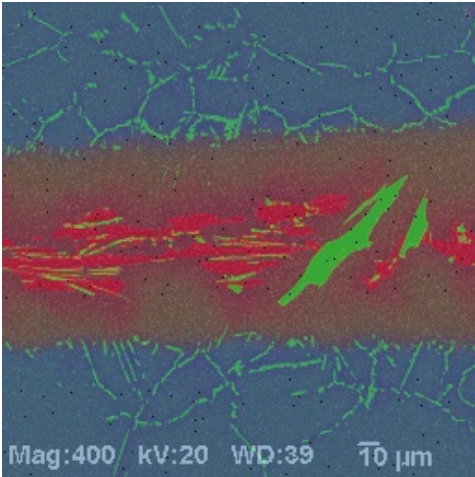
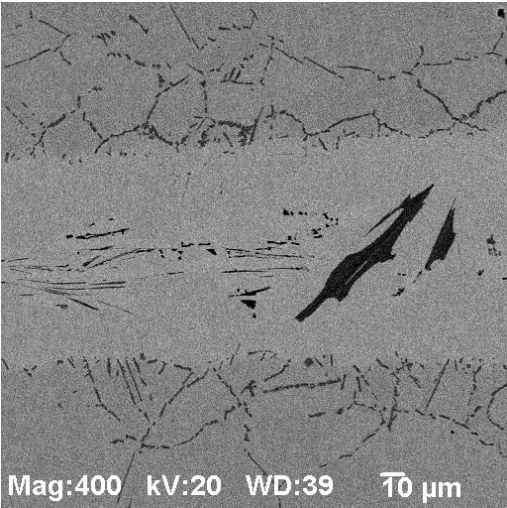
Red = Al

White=Ni+Al

Black.=borides

E. A. Leone, A. Rabinkin, B. Sarna, "Microstructure of thin-gauge austenitic and ferritic stainless steel joints brazed using Metglas® amorphous foil," *Welding in the World*, **50** (no 1/2), pp 3-15, 2006.

Example of EDX Mapping Analysis Across Braze Joint



Example of EDX Linescan Analysis Across Braze Joint

